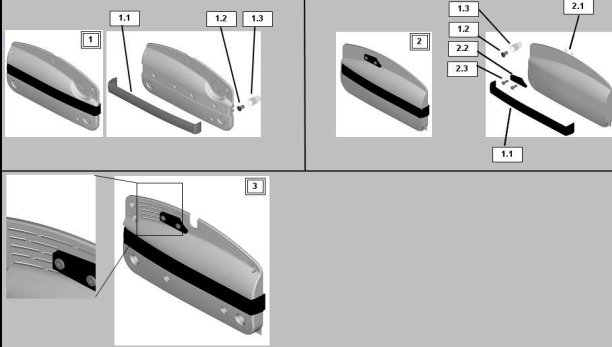


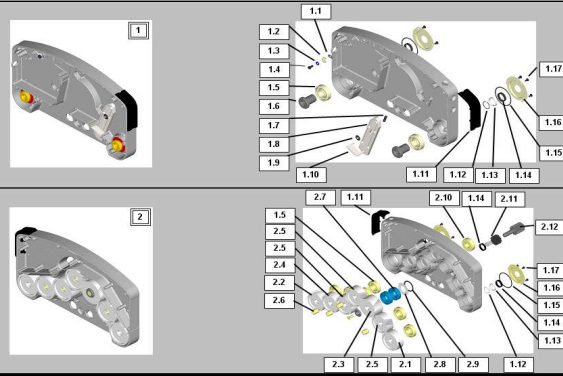
## SIDE COVER E and L / GEHDECKEL E und L



### Version 19.02.15

- # 72330 Side cover E and L
- # 72330 Gehdeckel E und L

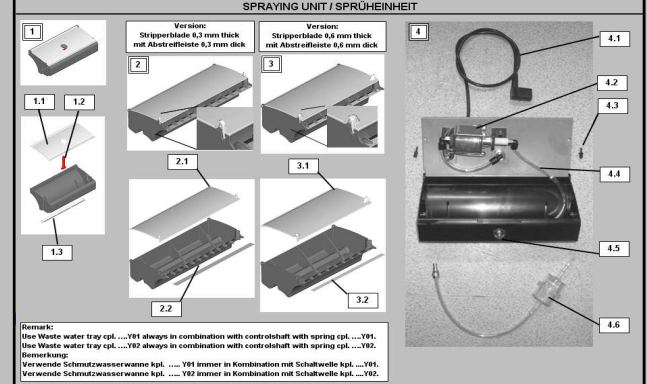
## HOUSING E and L / GEHÄUSEBLOCK E und L



### Version 19.02.15

- WD1\_13007241 Housing E and L
- WD1\_13007241 Housing E and L

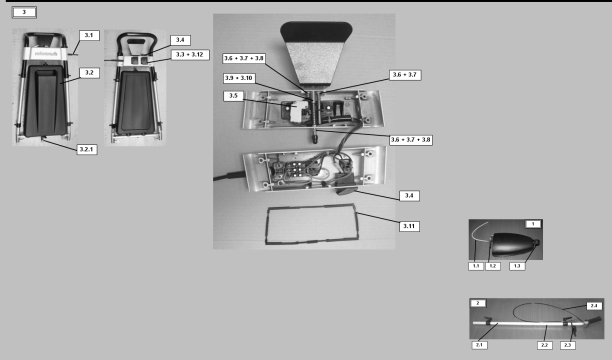
## CLEAN WATER TRAY / FRISCHWASSERWANNE WASTE WATER TRAY / SCHMUTZWASSERWANNE



### Version 19.02.14

- # 72314 C+W wasser wanne + spraying unit
- # 72314 F+S Wasserwanne + Sprüheinheit

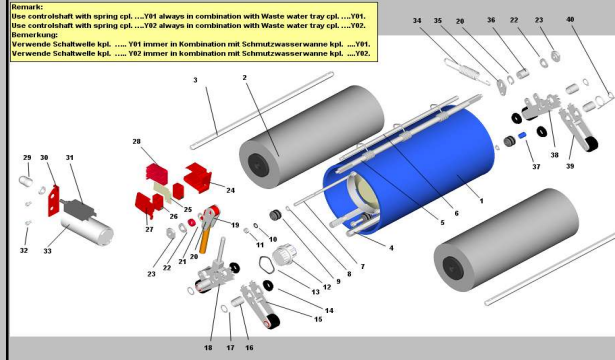
## HANDLE, TANK / STIEL, TANK



### Version 25.02.15

- # 72639 Handle, Tank
- # 72639 Stiel Tank

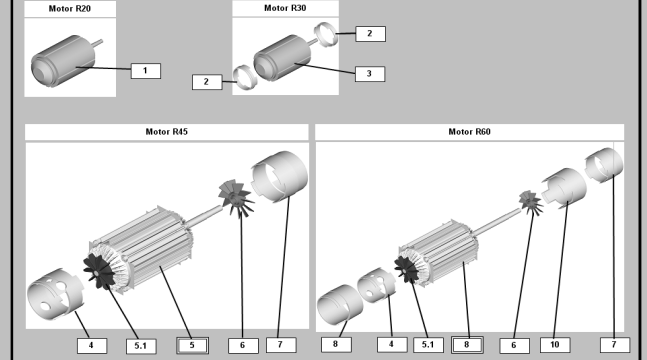
## DRUM, BRUSH ... TROMMEL; BÜRSTE ...



### Version 19.02.15

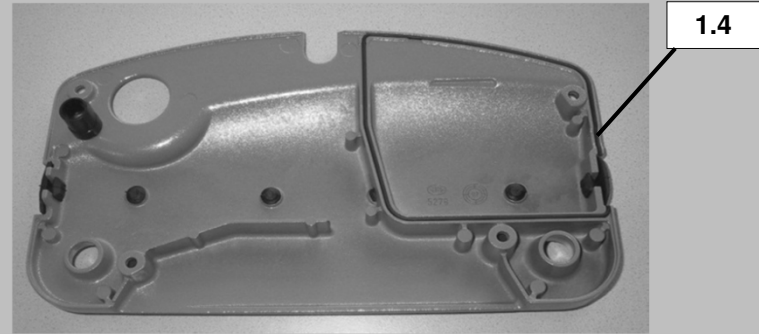
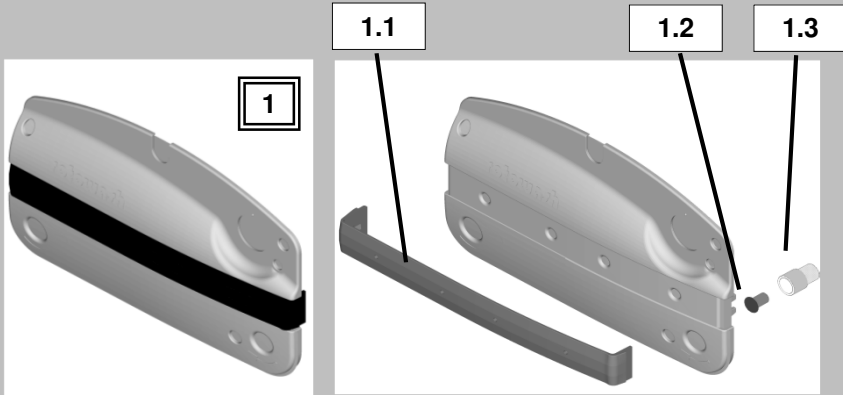
- # 72444 Drum, Brush ...
- # 72444 Trommel, Bürste ...

## MOTOR, DISTANCEPIECE / MOTOR, ZWISCHENSTÜCK

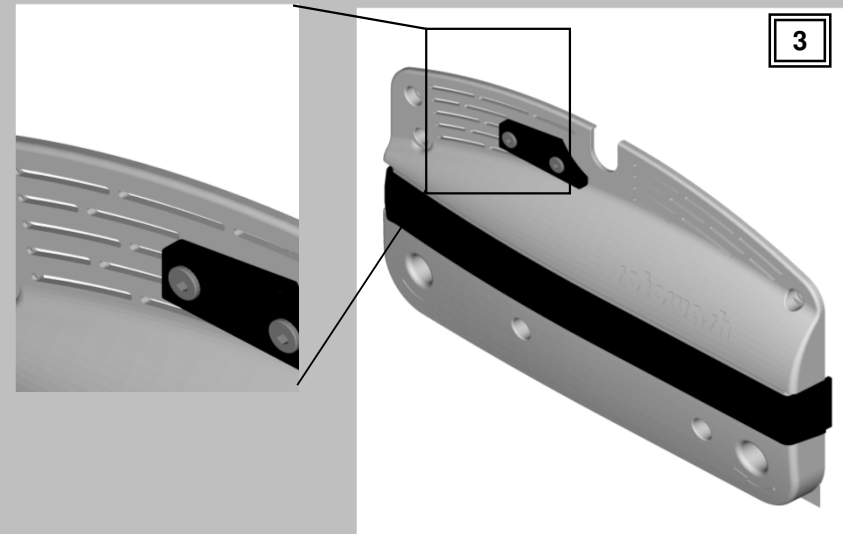
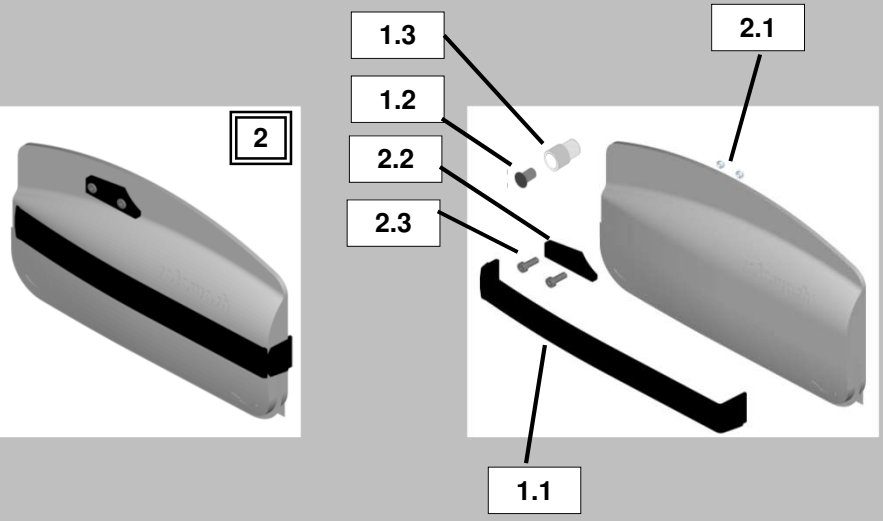


### Version 23.02.15

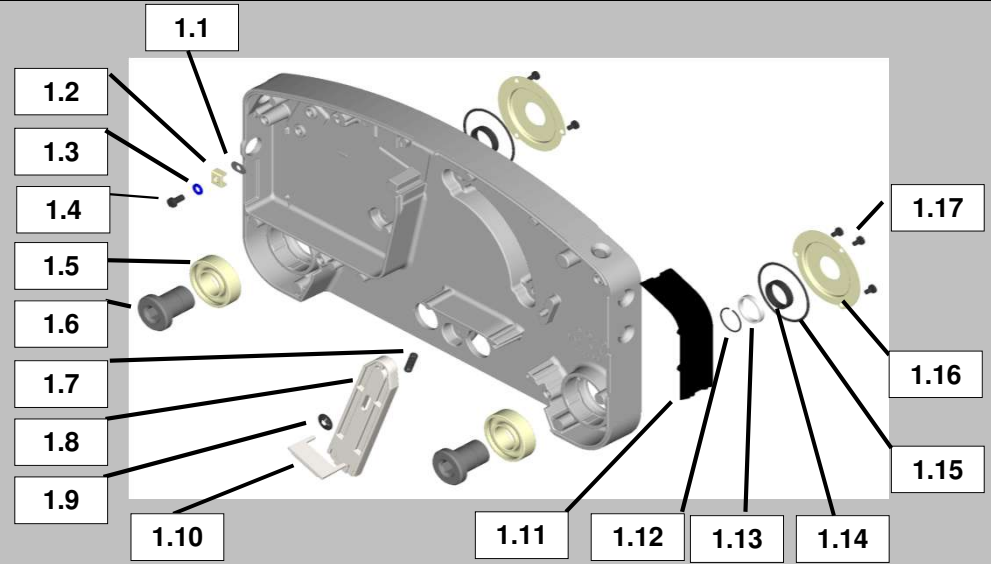
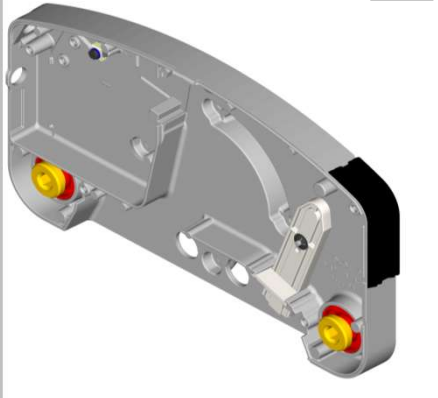
- # 72492 Motor, Distancepiece
- # 72492 Motor, Zwischenstück



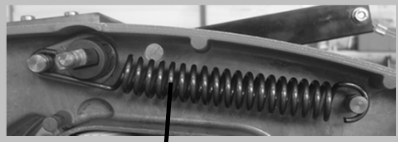
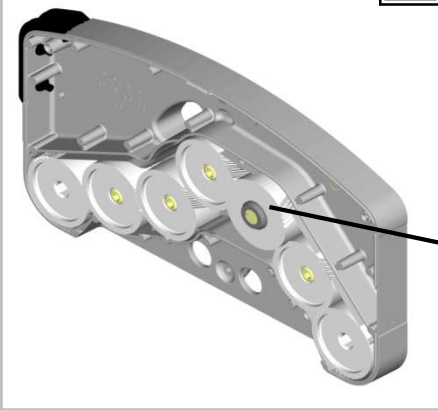
SIDE COVER L / GEHDECKEL L



1

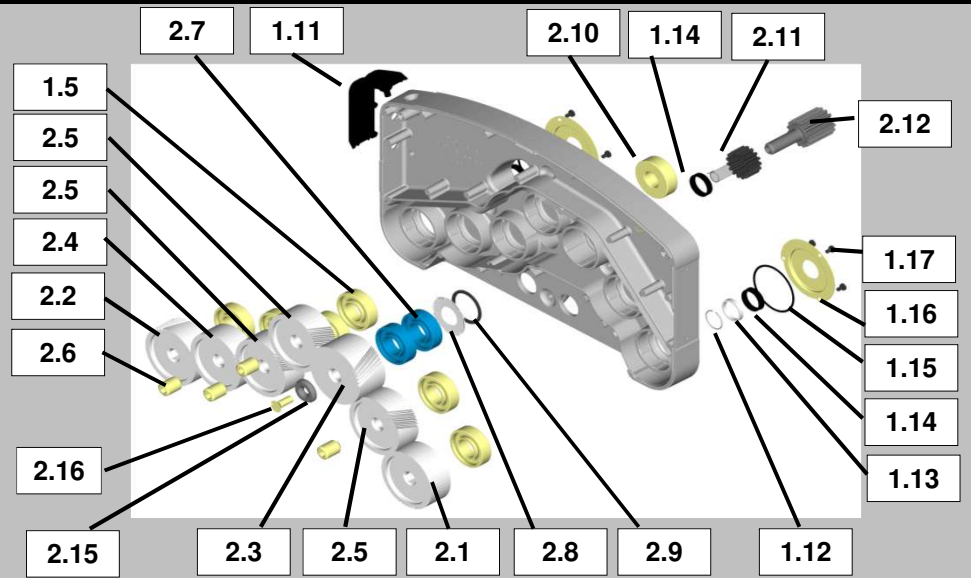


2



2.13

2.14



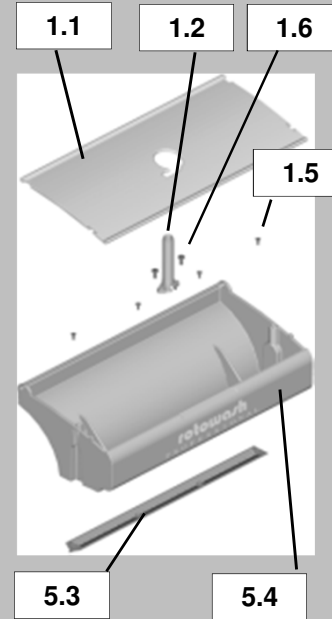
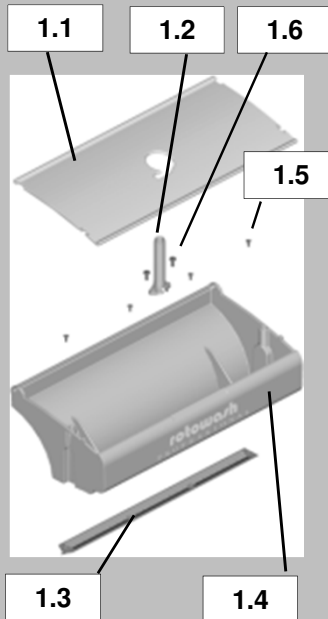
1



Version:  
without raising  
ohne Erhebung

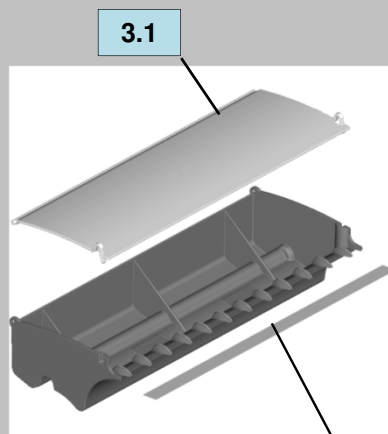
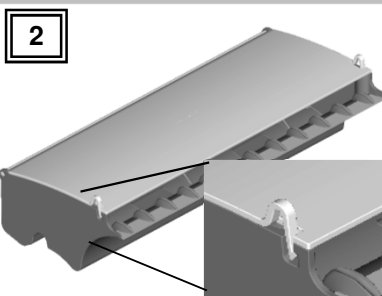


Version:  
with raising  
mit Erhebung



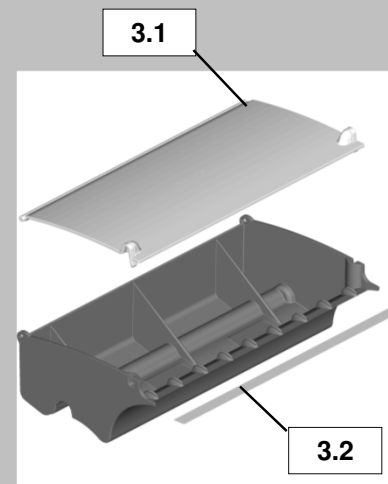
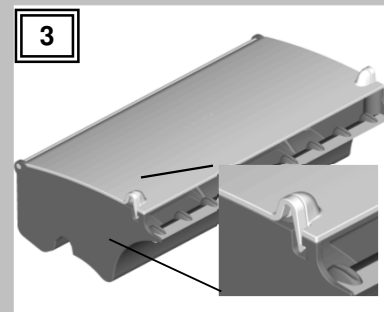
**Note:**  
Use Clean water tray 1.4 always in combination with water distributor 1.3.  
Use Clean water tray 5.3 always in combination with water distributor 5.4.  
**Achtung:**  
Verwende Frischwasserwasserwanne 1.4 immer in Kombination mit Verteilerleist 1.3.  
Verwende Frischwasserwasserwanne 5.4 immer in Kombination mit Verteilerleist 5.3.

Version:  
Stripperblade 0,3 mm thick  
Abstreifleiste 0,3 mm dick



2.2

Version:  
Stripperblade 0,6 mm thick  
Abstreifleiste 0,6 mm dick



3.2

**Remark:**

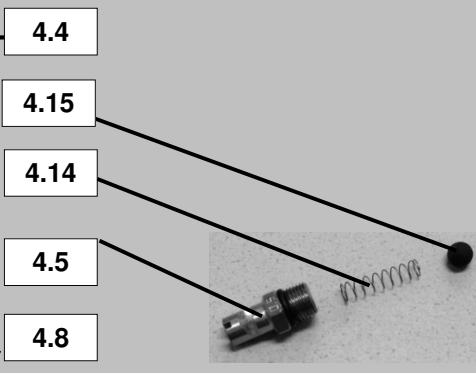
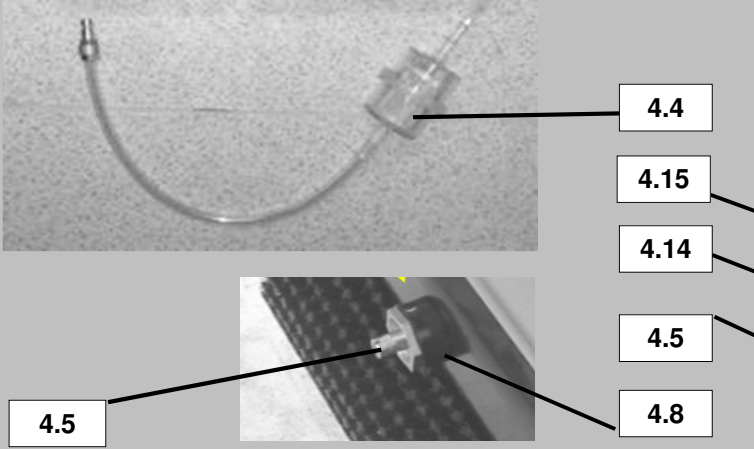
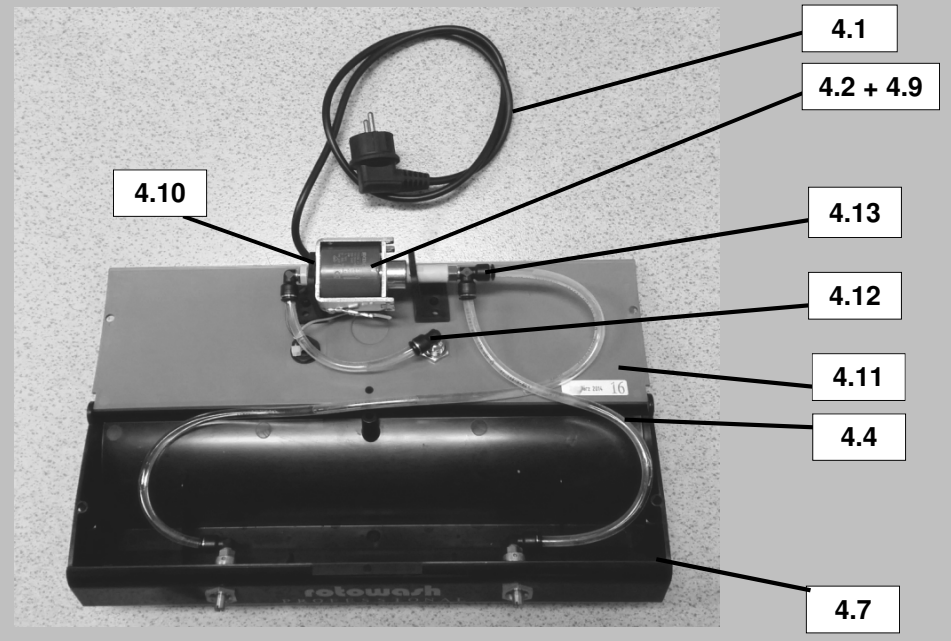
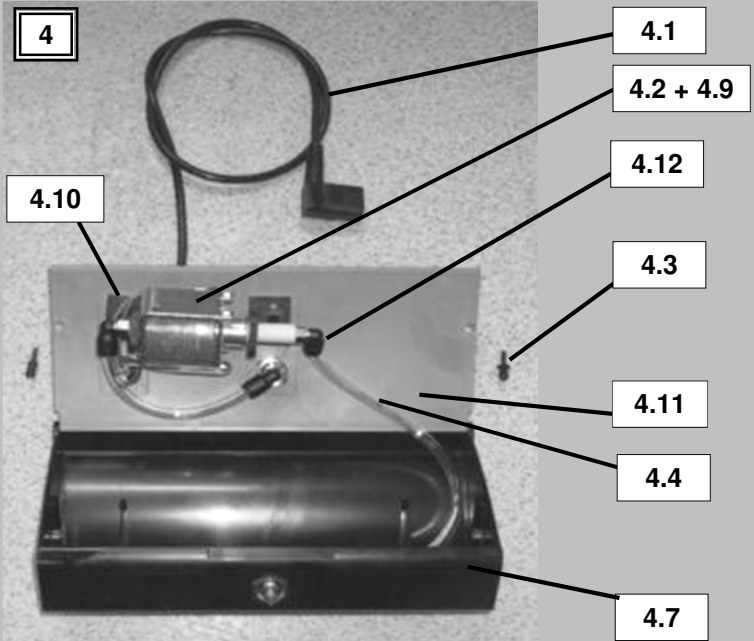
Use Waste water tray cpl. ....Y01 always in combination with controlshaft with spring cpl. ....Y01.

Use Waste water tray cpl. ....Y02 always in combination with controlshaft with spring cpl. ....Y02.

**Bemerkung:**

Verwende Schmutzwasserwanne kpl. .... Y01 immer in Kombination mit Schaltwelle kpl. ....Y01.

Verwende Schmutzwasserwanne kpl. .... Y02 immer in Kombination mit Schaltwelle kpl. ....Y02.

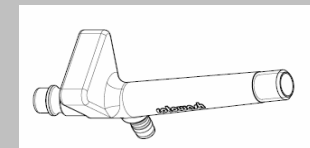




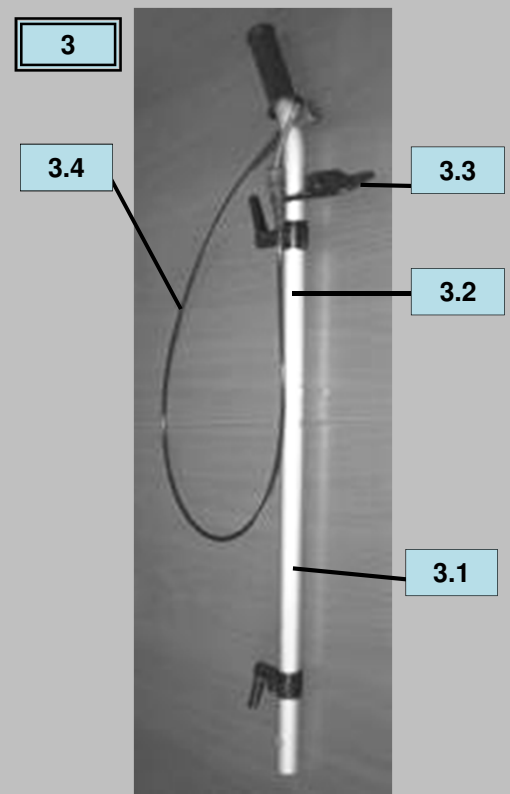
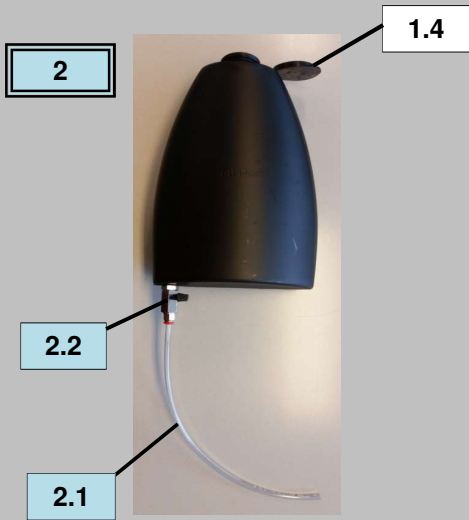
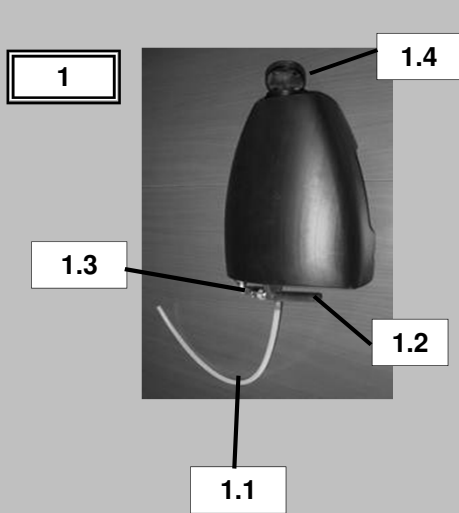
Following parts are needed when Quick Fit Valve NW 7,5 mm 377K01 is employed.  
Nachfolgende Teile sind notwendig wenn die Ventilkupplung 377K01 eingesetzt wird.



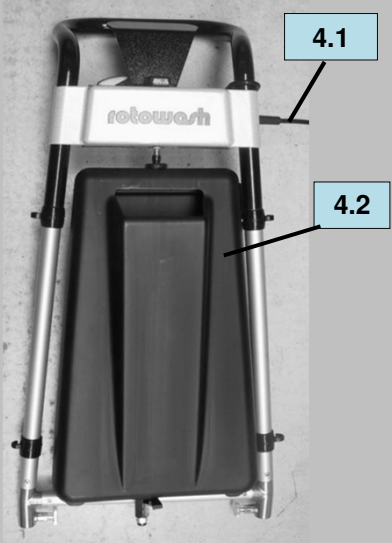
Coupling 1/4" NW 7,5mm (418N01)  
Kupplungsdose 1/4" NW 7,5mm (418N01)



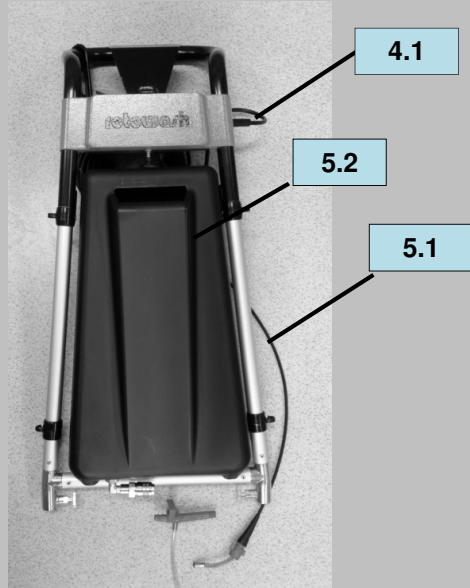
Quick fit valve NW 7,5mm (377K01)  
Ventilkupplung NW 7,5mm (377K01)



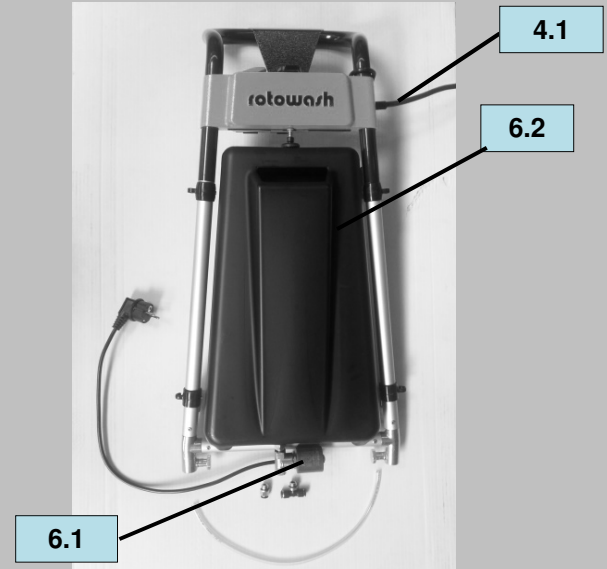
4



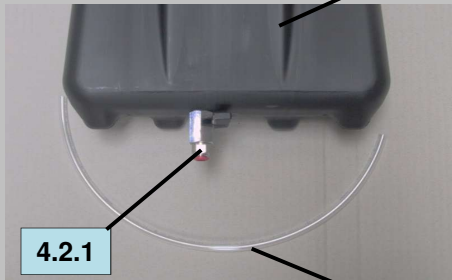
5



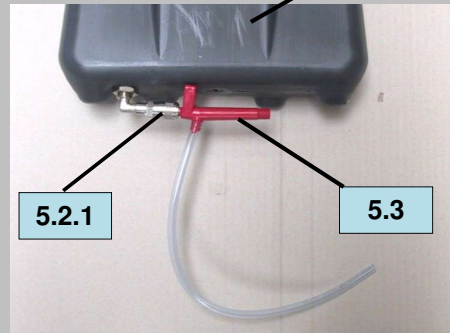
6



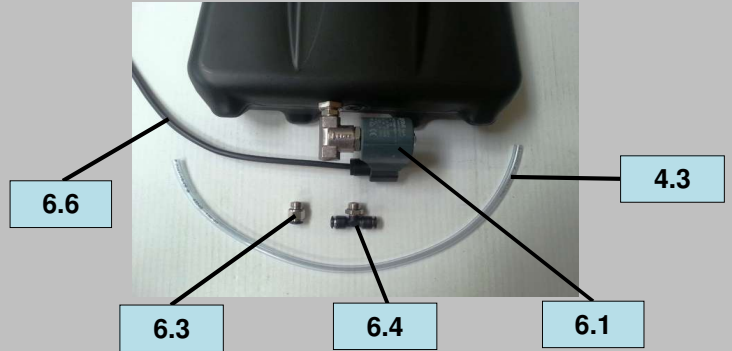
4.2



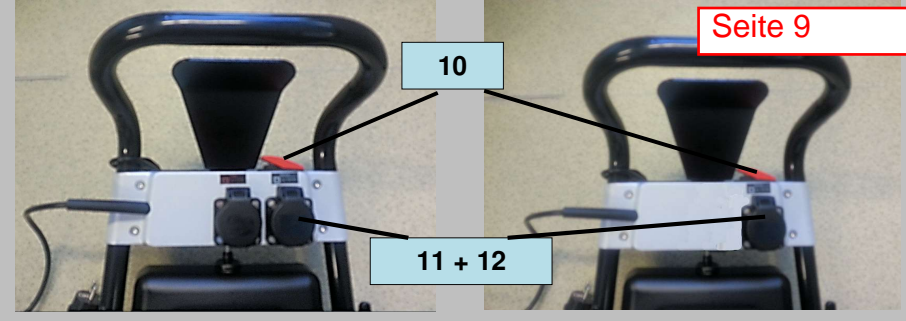
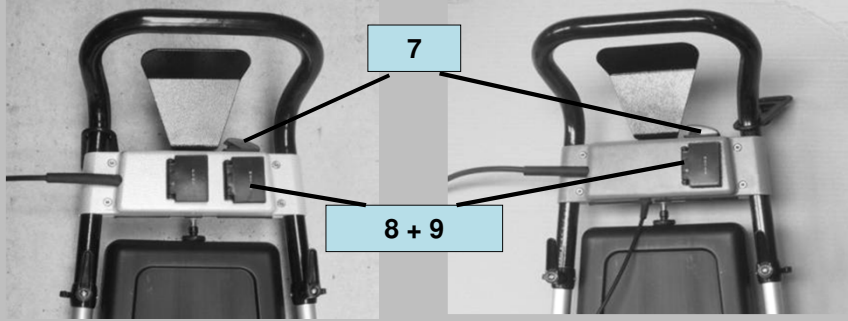
5.2



6.6

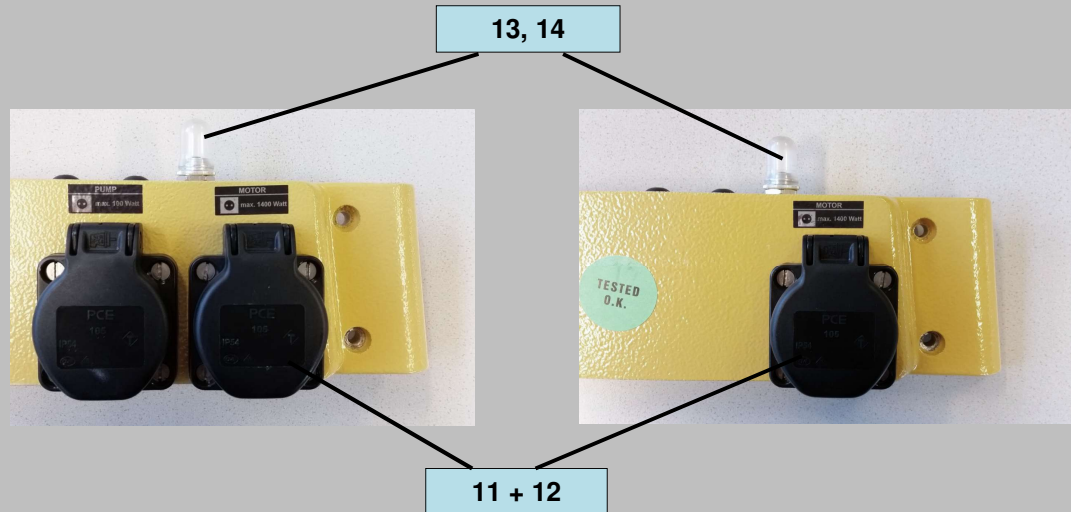


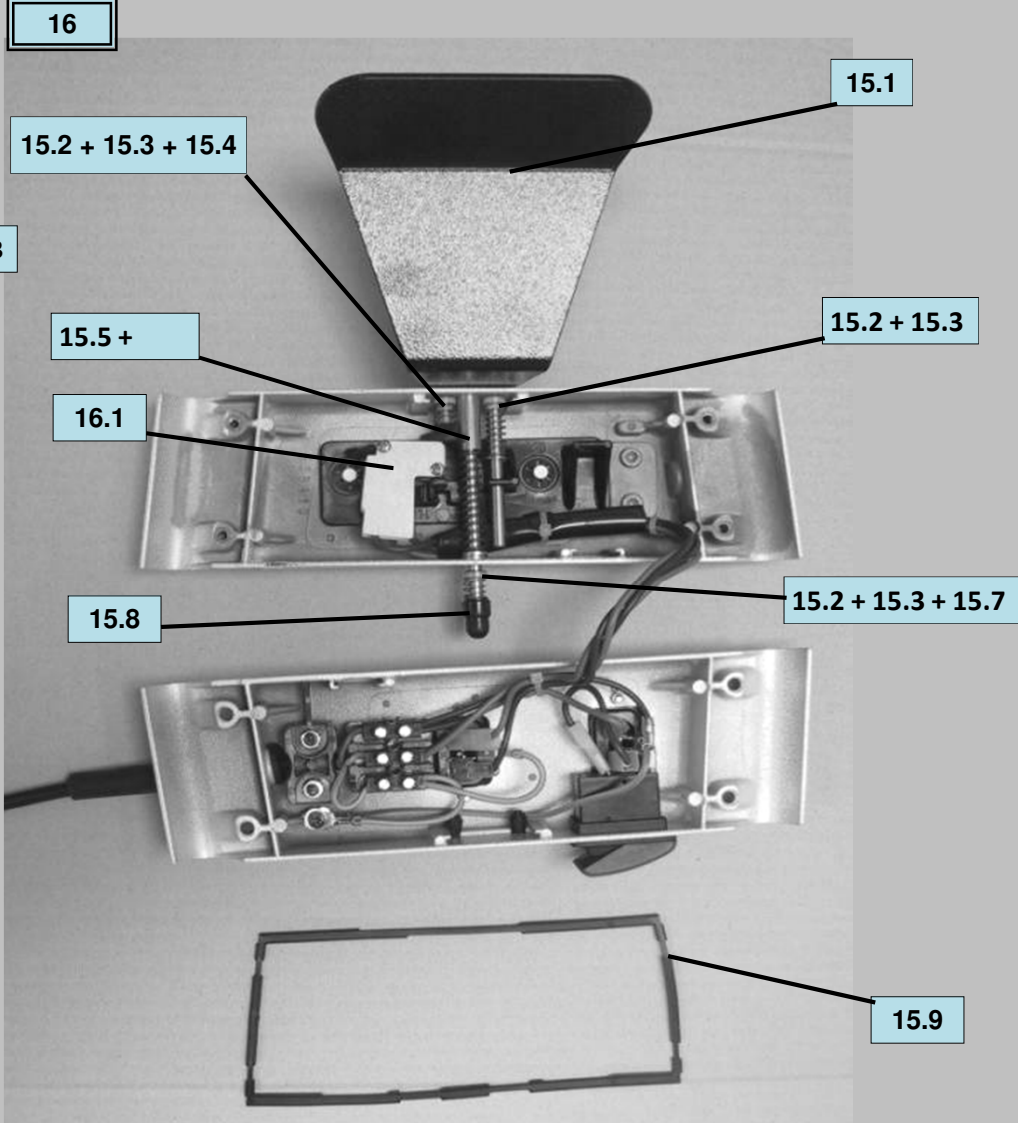
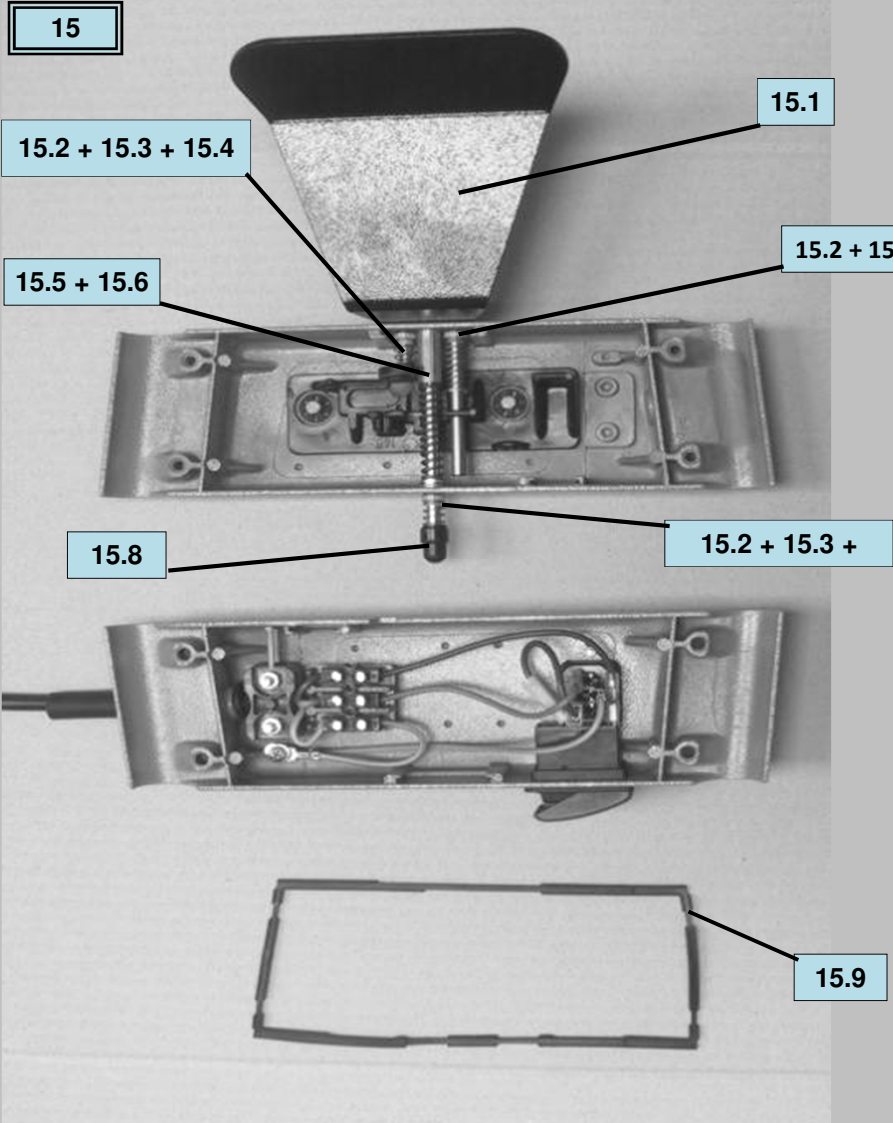




**Note:**  
Use thermorelay 7 always in combination with protection lid w/ plate 8 and socket IEC 9  
Use thermorelay 10 always in combination with seal 11 and socket Schuko Plus 12

**Bemerkung:**  
Verwende Motorschutzschalter 7 immer in Kombination mit Schutzdeckel mit Platte 8 und Steckdose IEC 9.  
Verwende Motorschutzschalter 10 immer in Kombination mit Abdichtung 11 und Steckdose Schuko Plus 12.

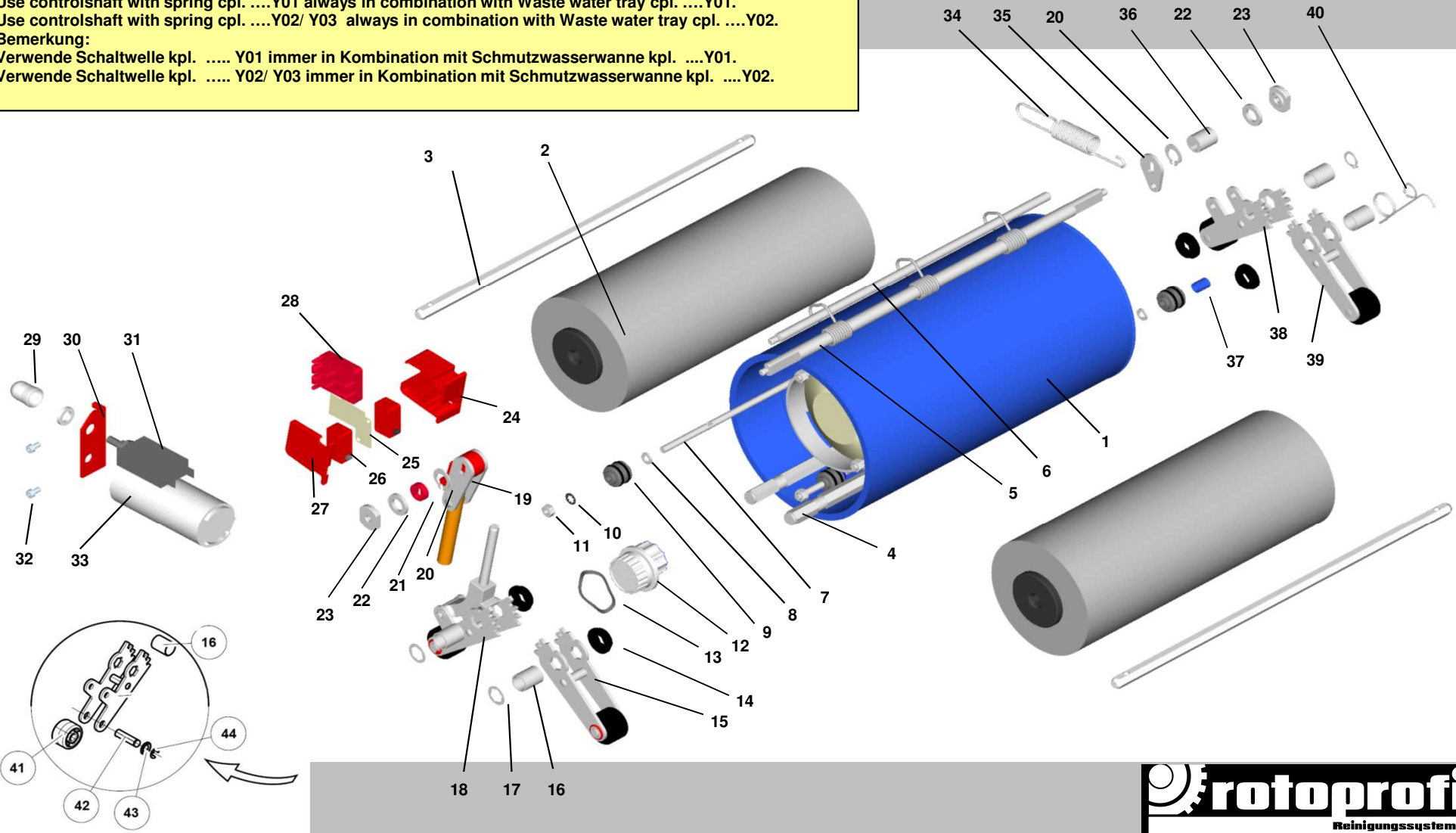




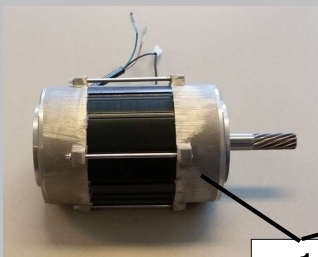
# DRUM, BRUSHES, Affiliated Parts

# TROMMEL, BÜRSTEN, Benachbarte Teile

**Remark:**  
Use controlshaft with spring cpl. ....Y01 always in combination with Waste water tray cpl. ....Y01.  
Use controlshaft with spring cpl. ....Y02/ Y03 always in combination with Waste water tray cpl. ....Y02.  
**Bemerkung:**  
Verwende Schaltwelle kpl. .... Y01 immer in Kombination mit Schmutzwasserwanne kpl. ....Y01.  
Verwende Schaltwelle kpl. .... Y02/ Y03 immer in Kombination mit Schmutzwasserwanne kpl. ....Y02.

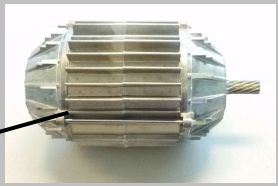


Motor R20



1

Motor R20 Kühlrippen / cooling



Motor R30



3.1

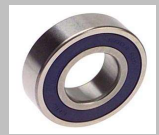
3

Motor R45



6.5

Motor R60



6.5



5

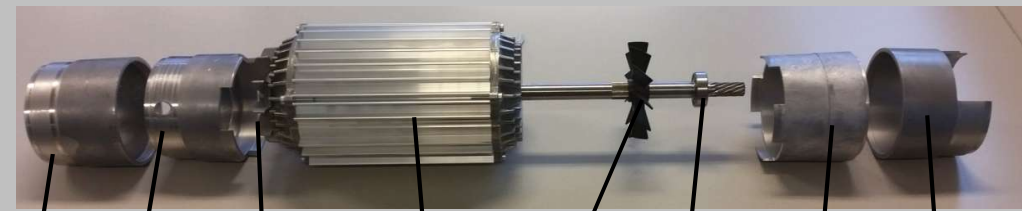
6.1

6

6.2

6.3 + 6.4

7



9

5

6.1

10

6.2

6.3 + 6.4

11

12